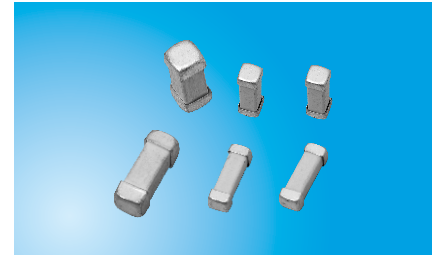


Fast Acting Brick Fuse 1025HA Series

Description

- ▶ Surface mount high current fuse
- ▶ The High Current Fuse
- ▶ Solder immersion compatible



Features

- ▶ 125VAC/72VDC voltage rating 20A-40A
- ▶ 60VDC voltage rating 50A
- ▶ Fast Acting
- ▶ RoHS compliant
- ▶ Fully compatible with lead-free solder alloys and higher temperature profiles associated with lead free assembly

Applications

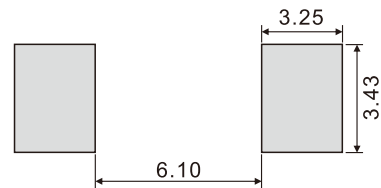
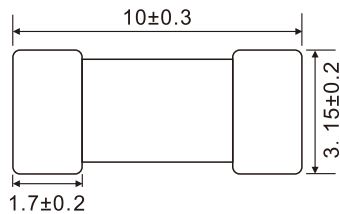
- ▶ Voltage regulator module for PC server
- ▶ Cooling fan system for PC server
- ▶ Storage system power
- ▶ Basestation power supply

Fast Acting Brick Fuse 1025HA Series

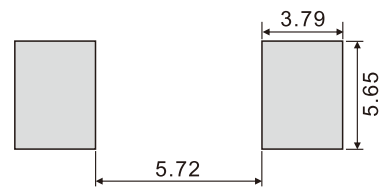
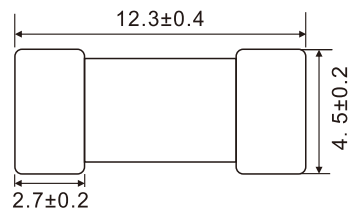
Dimensions(mm)

Recommended Pad Layout(mm)

20A-30A



40A-50A



Electrical Specifications

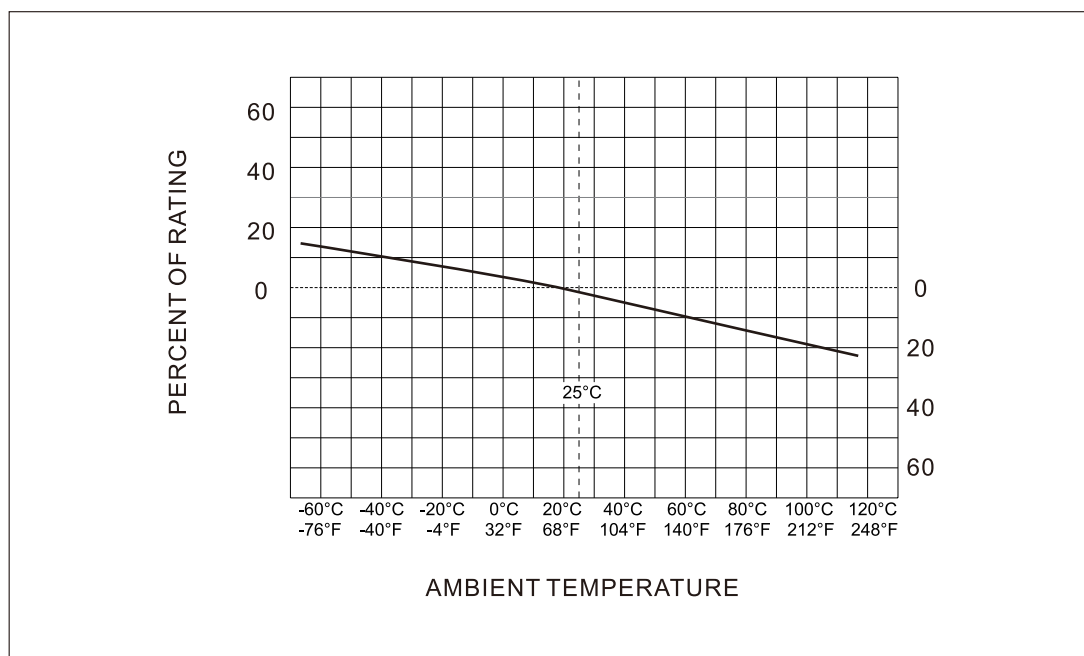
Catalog Number	Ampere Rated In	Marking	Voltage Rating(VDC)	Norminal Resistance Cold(Ohm)	Norminal Melting $I^2T(A^2sec)$	Voltage Drop(mv)
1025HA20A	20A	20A	AC125V/DC72V	0.0032	25	120
1025HA25A	25A	25A	AC125V/DC72V	0.0025	45	110
1025HA30A	30A	30A	AC125V/DC72V	0.0017	110	90
1025HA40A	40A	40A	AC125V/DC72V	0.0013	450	90
1025HA50A	50A	50A	DC60V	0.0011	600	90

Fast Acting Brick Fuse 1025HA Series

Electrical Characteristics

Electrical Characteristics		
Ampere Rating	% of Amp Rating	Opening Time
20A-50A	100%	4 Hours Minimum
	200%	60 Seconds Maximum

Temperature Rerating Curve

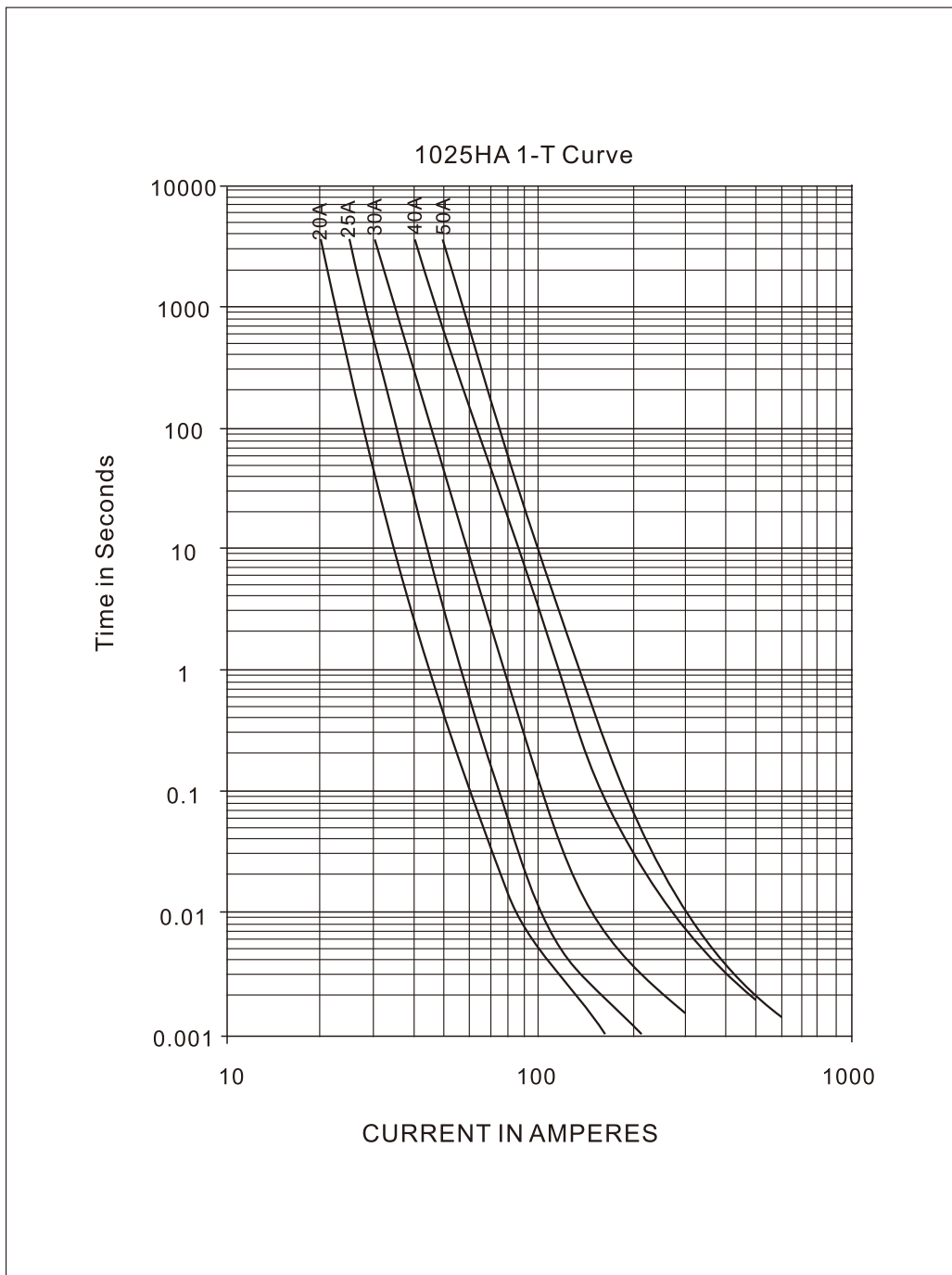


Note:

- ▶ Rerating depicted in this curve is in addition to the standard derating of 25% for continuous operation.

Fast Acting Brick Fuse 1025HA Series

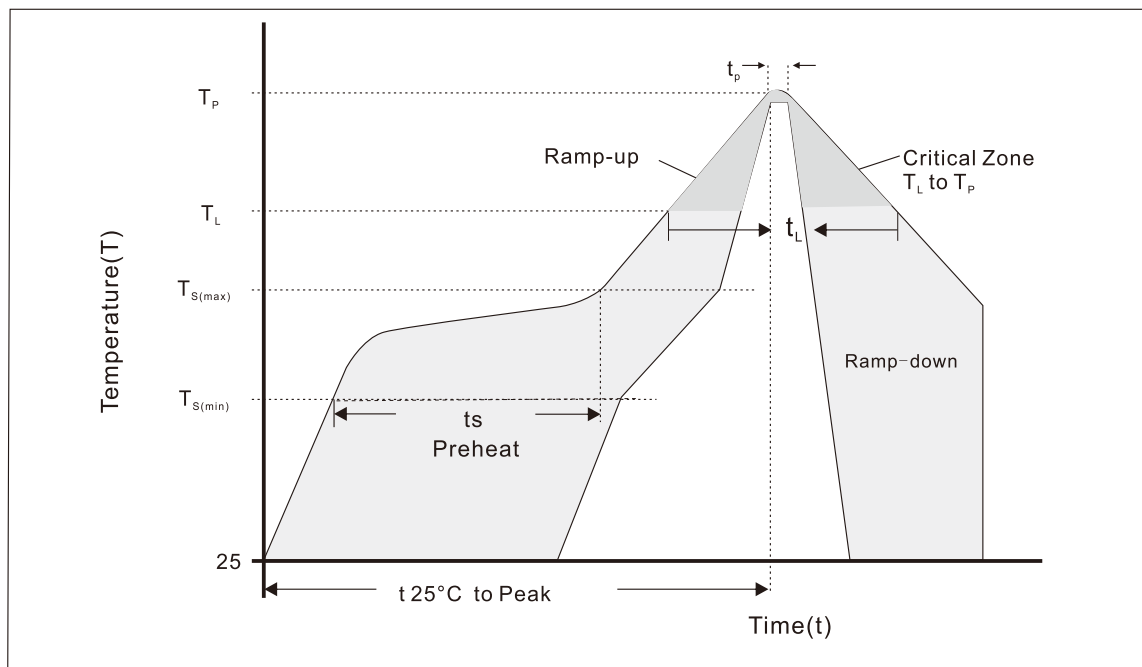
Time-Current Characteristics



Fast Acting Brick Fuse 1025HA Series

Soldering Parameters

Reflow Condition		Pb- Free assembly
Heat Pre	Temperature Min(T_s)	150°C
	Temperature Max(T_s)	200°C
	Time (Min to Max)(t_s)	60 -120 secs
Average ramp up rate (Liquidus)Temp (T_L) to peak		5°C/second max
T_s (max) to T_L -Ramp-up Rate		5°C/second max
Reflow	- Temperature (T_L) (Liquidus)	217°C
	Time (Min to Max) (t_L)	60 – 90 seconds
Peak Temperature (T_p)		250 ^{+0/-5} °C
Time within 5°C of actual peak Temperature (t_p)		20-40 seconds
Ramp-down Rate		6°C/second max
Time 25°C to peak Temperature (T_p)		8 minutes max.
Do not exceed		260°C



Fast Acting Brick Fuse 1025HA Series

BC performance

PN	BC	
	DC	AC
1025HA20A	DC72V/500A	AC125V/100A
1025HA25A	DC72V/500A	AC125V/100A
1025HA30A	DC72V/500A	AC125V/100A
1025HA40A	DC72C/500A	AC125V/100A
1025HA50A	DC60V/600A	NA

Operation Temperature

- ▶ -40°C to 125°C

Physical Specification Materials

- ▶ Ceramic Body/White porcelain
- ▶ Element Plate:Silver plated copper
- ▶ End Cap:silver plated brass cap
- ▶ High temperature solder preform
- ▶ Filler:Sand

Packaging

- ▶ On Tape:1025HA20A-30A-1500pcs Per Reel
- ▶ 1025HA20A-30A-9000pcs outer box
- ▶ 1025HA40A-50A-1000pcs Per Reel
- ▶ 1025HA40A-50A-6000pcs outer box