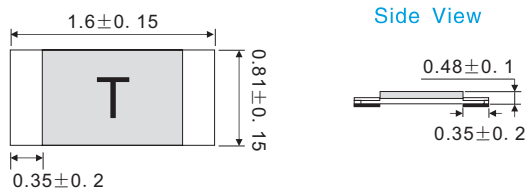


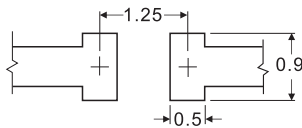
Type 0603 HI 貼片保險絲 High Inrush Chipfuse



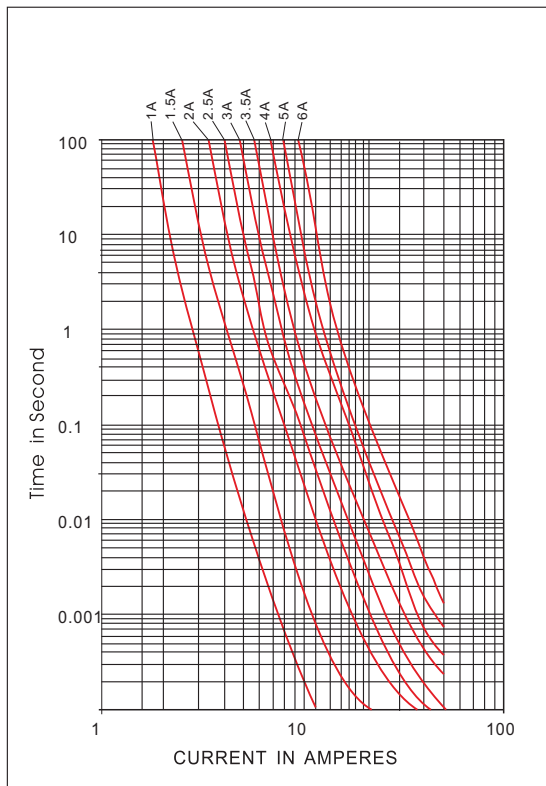
Dimensions(mm)尺寸



Recommended Pad Layout(mm)



Time Current Characteristic Curve/電流-時間曲綫



Electrical Specifications 電氣特性

Catalog Number 料號	Ampere Rated In 額定電流	Marking 標記	Voltage Rating (VDC) 額定電壓	Norminal Resistance Cold(Ohm) 標準冷阻值	Norminal Melting I ² T(A ² sec) 標準熔斷值
0603HI1A	1A	H	32V	0.257	0.018
0603HI1.5A	1.5A	K	32V	0.137	0.065
0603HI2A	2A	N	32V	0.072	0.115
0603HI2.5A	2.5A	O	32V	0.052	0.140
0603HI3A	3A	P	32V	0.035	0.210
0603HI3.5A	3.5A	R	32V	0.024	0.550
0603HI4A	4A	S	32V	0.021	0.520
0603HI5A	5A	T	32V	0.014	1.700
0603HI6A	6A	V	32V	0.008	2.300

Electrical Characteristics 熔斷特性

Electrical Characteristics 熔斷特性	
% of Amp Rating	Opening Time
100%In	4 Hours Minimum
200%In	1-60 Seconds
250%In	5 Seconds Maximum

Approvals 認證

Safety Agency	Amp Range/Volt @1.R ability
	1A-6A/32V DC@50A

Operation Temperature 工作溫度

-40°C to 125°C

Physiscal Specification 物理特性

Materials 材料

Ceramic Body/Glass Cover

Terminations: Silver over-plated with nickel and tin

Element: Silver or Silver / palladium

Packaging 包裝

On Tape:0603HI-5000pcs Per Reel

0603HI-50000 pcs outer box